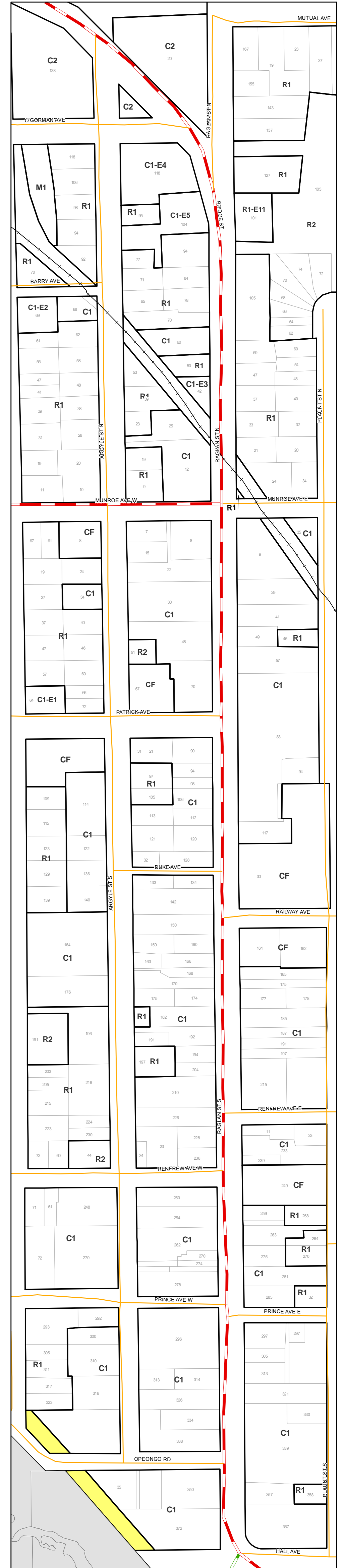
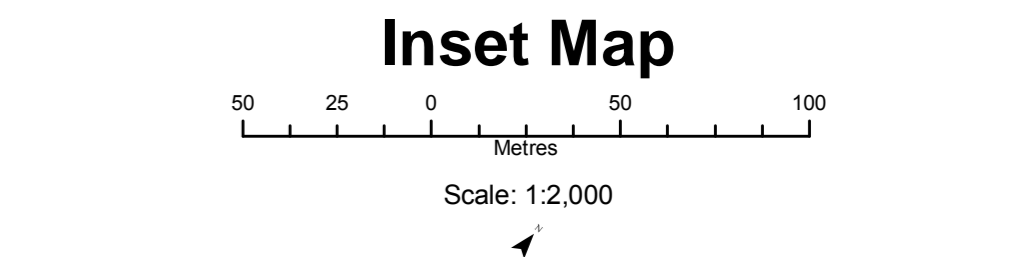


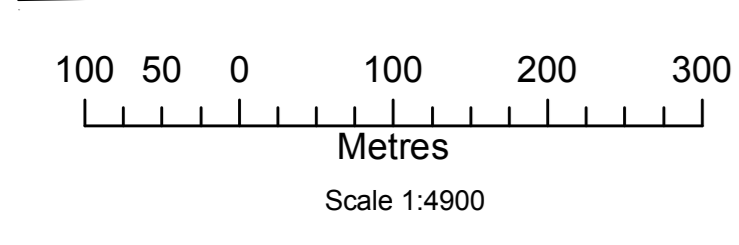
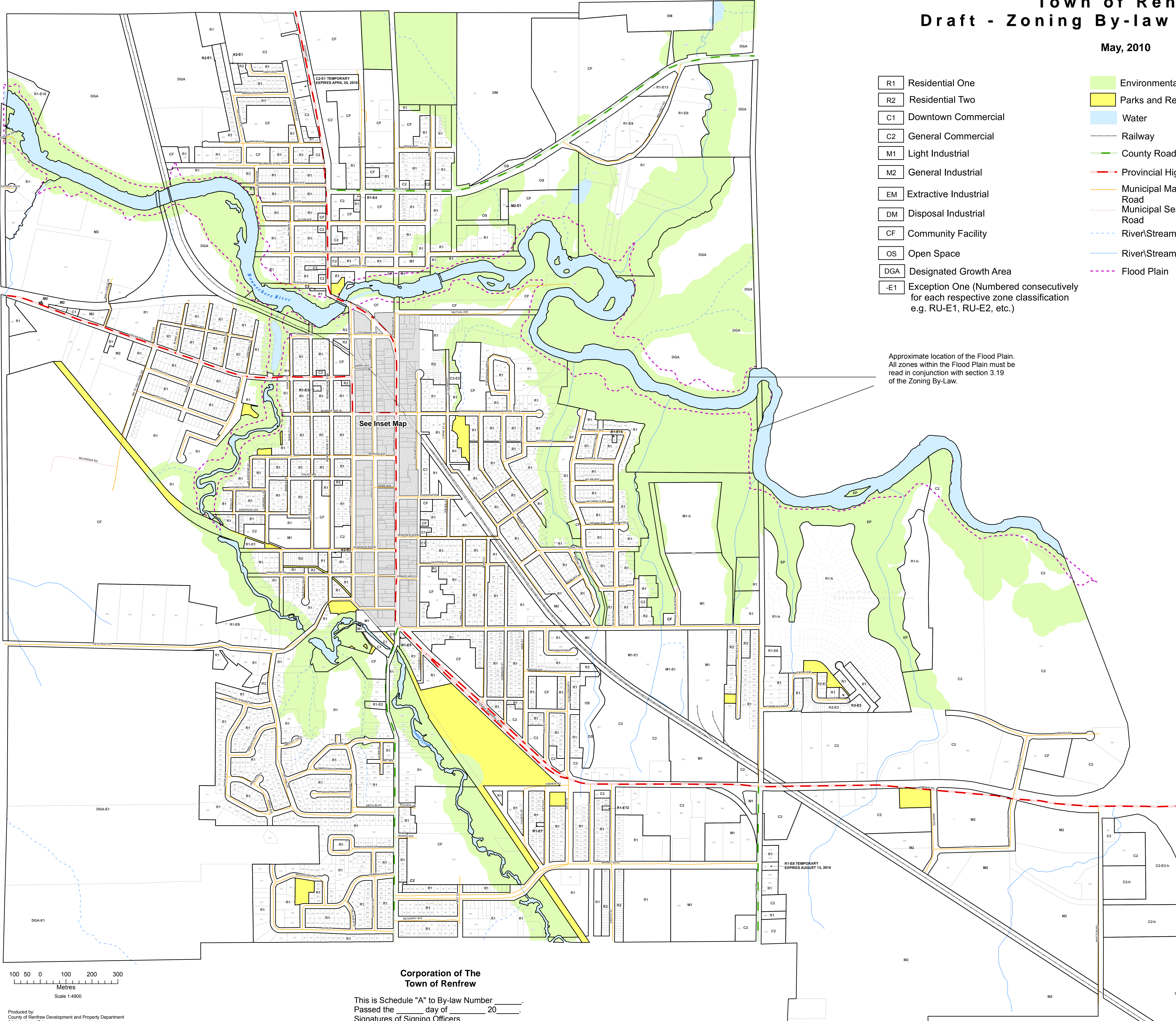
Town of Renfrew Draft - Zoning By-law - Schedule 'A'

May, 2010

- | | | |
|-----|--|-------------------------------|
| R1 | Residential One | Environmental Protection (EP) |
| R2 | Residential Two | Parks and Recreation (PR) |
| C1 | Downtown Commercial | Water |
| C2 | General Commercial | Railway |
| M1 | Light Industrial | County Road |
| M2 | General Industrial | Provincial Highway |
| EM | Extractive Industrial | Municipal Maintained Road |
| DM | Disposal Industrial | Municipal Seasonal Road |
| CF | Community Facility | River/Stream, Intermittent |
| OS | Open Space | River/Stream, Permanent |
| DGA | Designated Growth Area | Flood Plain |
| -E1 | Exception One (Numbered consecutively for each respective zone classification e.g. RU-E1, RU-E2, etc.) | |



Approximate location of the Flood Plain. All zones within the Flood Plain must be read in conjunction with section 3.19 of the Zoning By-Law.



Corporation of the
Town of Renfrew

This is Schedule "A" to By-law Number _____
Passed the _____ day of _____ 20____
Signatures of Signing Officers

Mayor

Clerk

CONSOLIDATION DATE:

Produced by:
County of Renfrew Development and Property Department
9 International Drive
Pembroke, Ontario K8A 6W5

Sources:
Base Data: OMNR & Renfrew County
Projection: UTM NAD83 Zone 18
Data Acquired on February 5, 2008

May, 2010

This map is illustrative only. Do not rely on it as being precise indicator of routes, locations of features, nor as a guide to navigation.